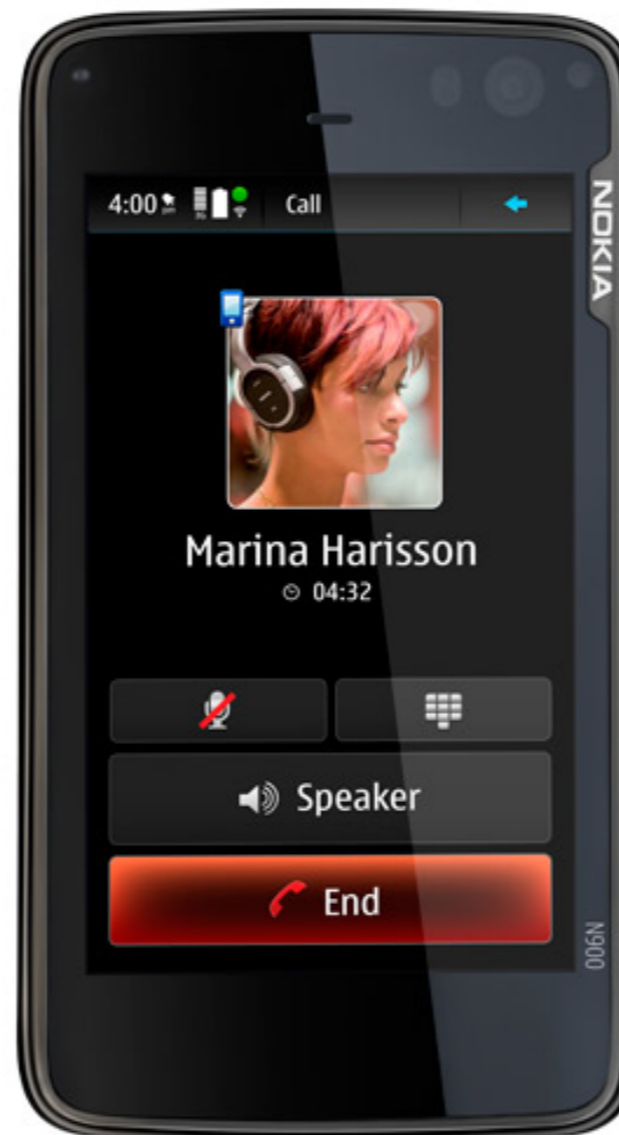


# Service Schematics

# NOKIA N900

## RX-51



### IMPORTANT

This document is intended for use by authorized Nokia service centers only. Please use the document together with other documents such as the Service Manual and Service Bulletins.

### Version information

While every effort has been made to ensure that the document is accurate, some errors may exist. Please always check for the latest published version for this document.

If you find any errors in the document please send email to: [TrainingAndVendorDevelopment@nokia.com](mailto:TrainingAndVendorDevelopment@nokia.com)

### Version history

1.0 First Approved version  
2.0 Added display Flex connector

This material, including documentation and any related computer programs is protected by copyright, controlled by Nokia. All rights are reserved. Copying, including reproducing, modifying, storing, adapting or translating any or all of this material requires the prior written consent of Nokia. This material also contains company confidential information, which may not be disclosed to others without the prior written consent of Nokia.

### Measurements

All measurements were made using the following equipment:

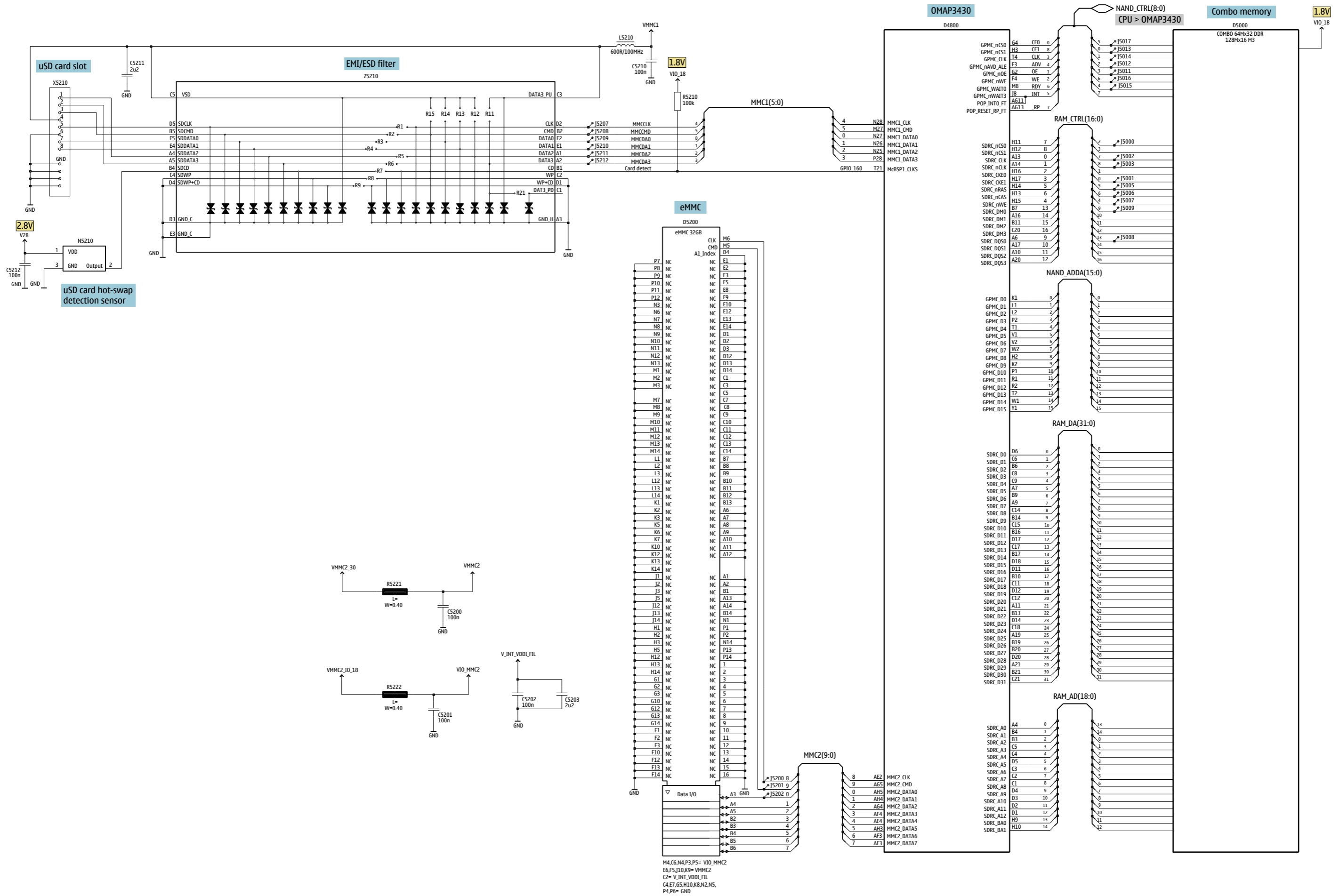
Nokia repair SW : Phoenix 2009.20.011.39237  
Oscilloscope : PicoScope 3206  
Spectrum Analyzer : Advantest R3162  
Multimeter : Fluke 175

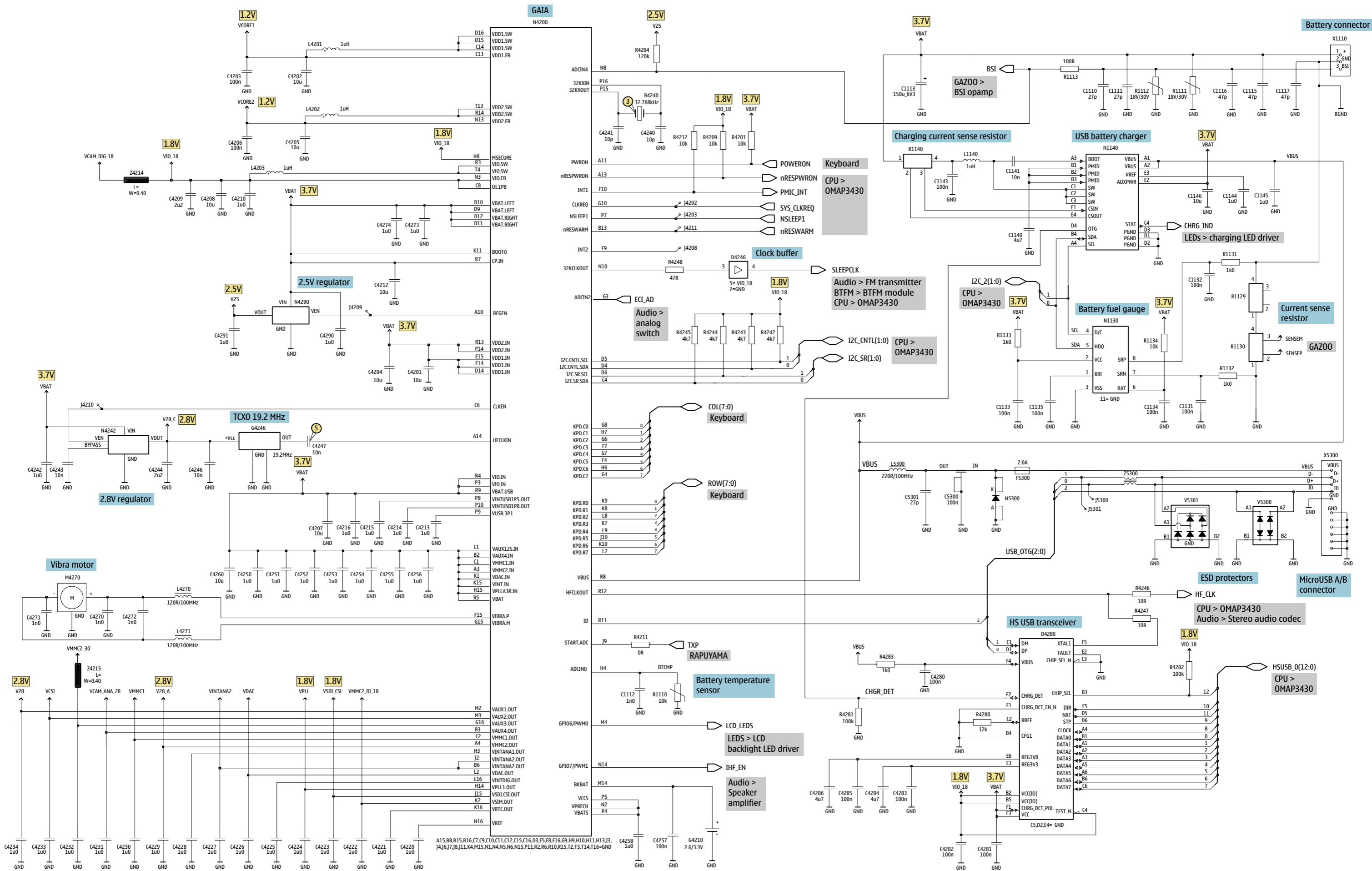
The measurement points in the schematics are linked to the oscillograms on the signal overview page. The links cycle between the measurement point in the schematics, the oscillogram and the measurement point in the component finder.

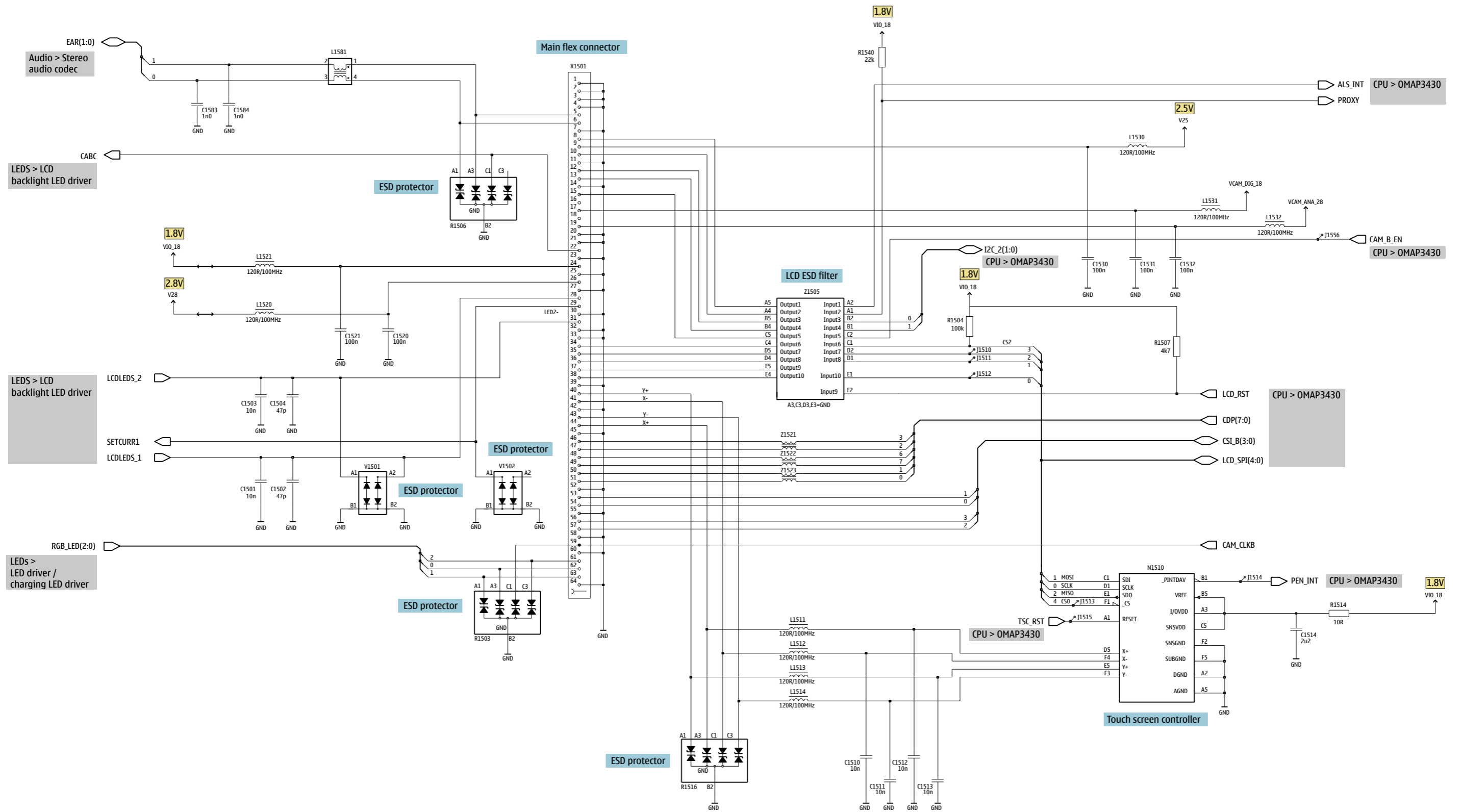
### Table of Contents

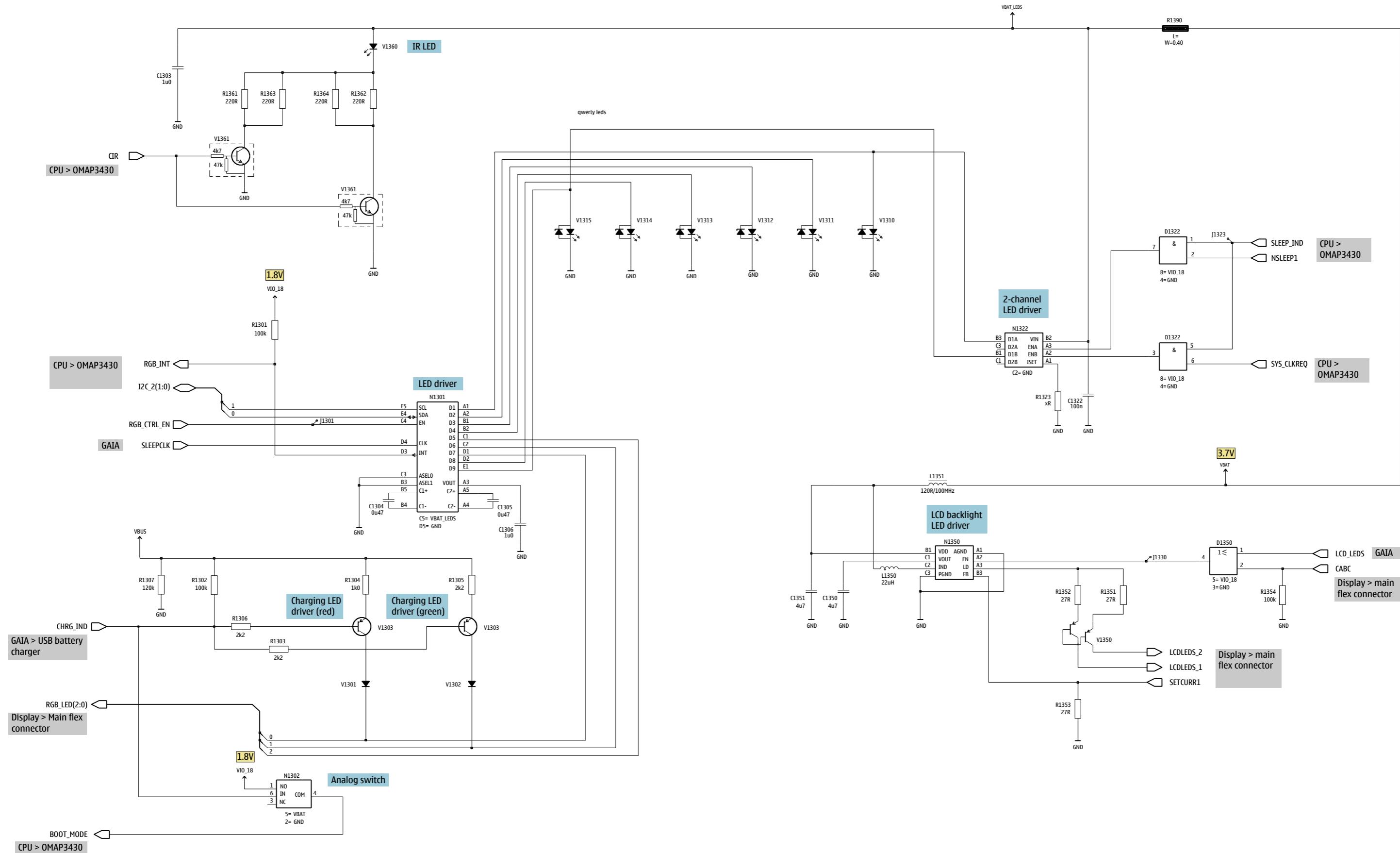
Front page	1
OMAP 3430	2
OMAP memories	3
GAIA	4
Display	5
LEDs	6
Keyboard	7
Audio, FMTX	8
BTFM, WLAN	9
GPS	10
RAPUYAMA, GAZOO	11
Display flex connector	12
RF part	13
Signal Overview (Top)	14
Signal Overview (Bottom)	15
Component Finder (Top)	16
Component Finder (Bottom)	17
Component Finder (Display flex connector)	18

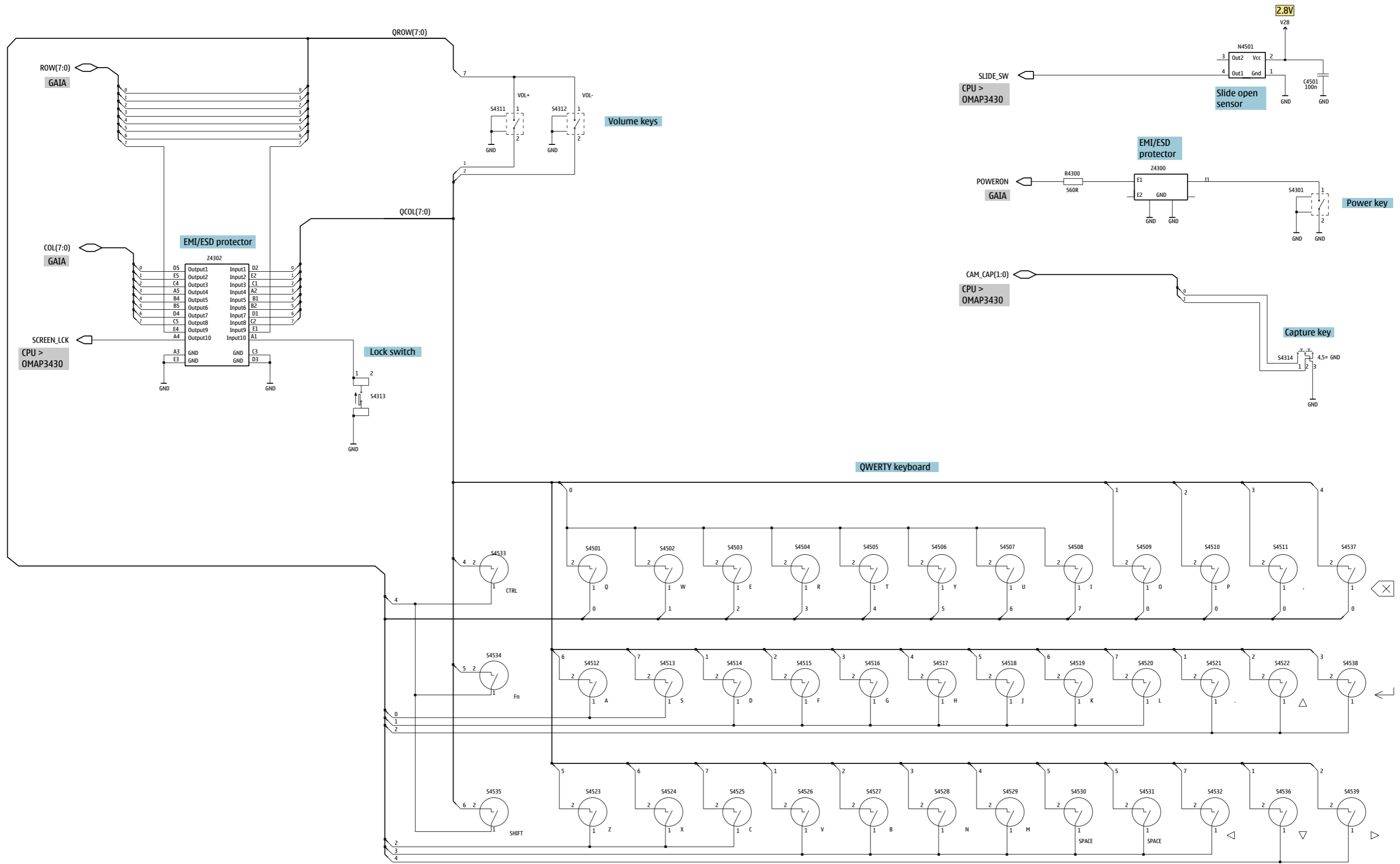


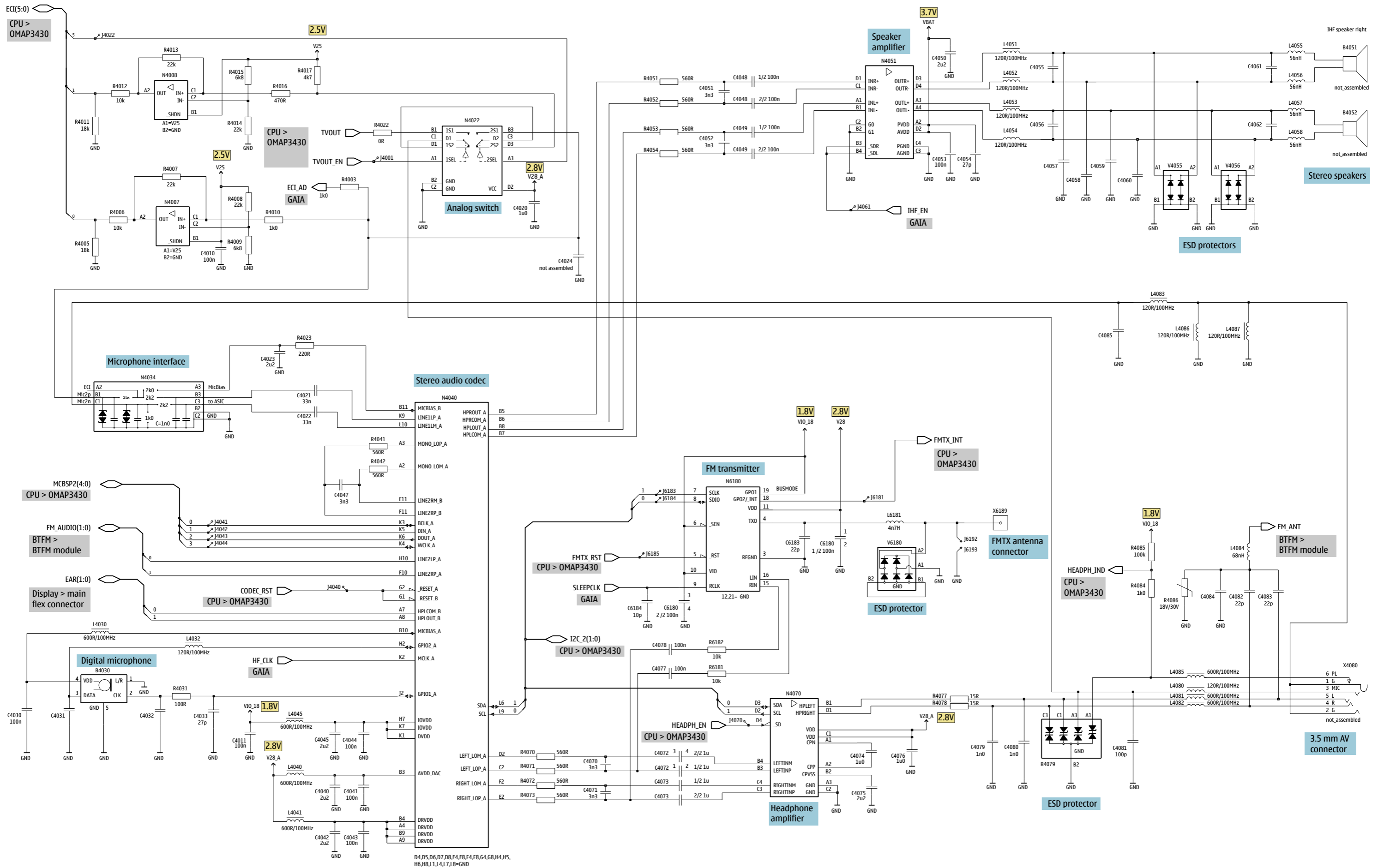




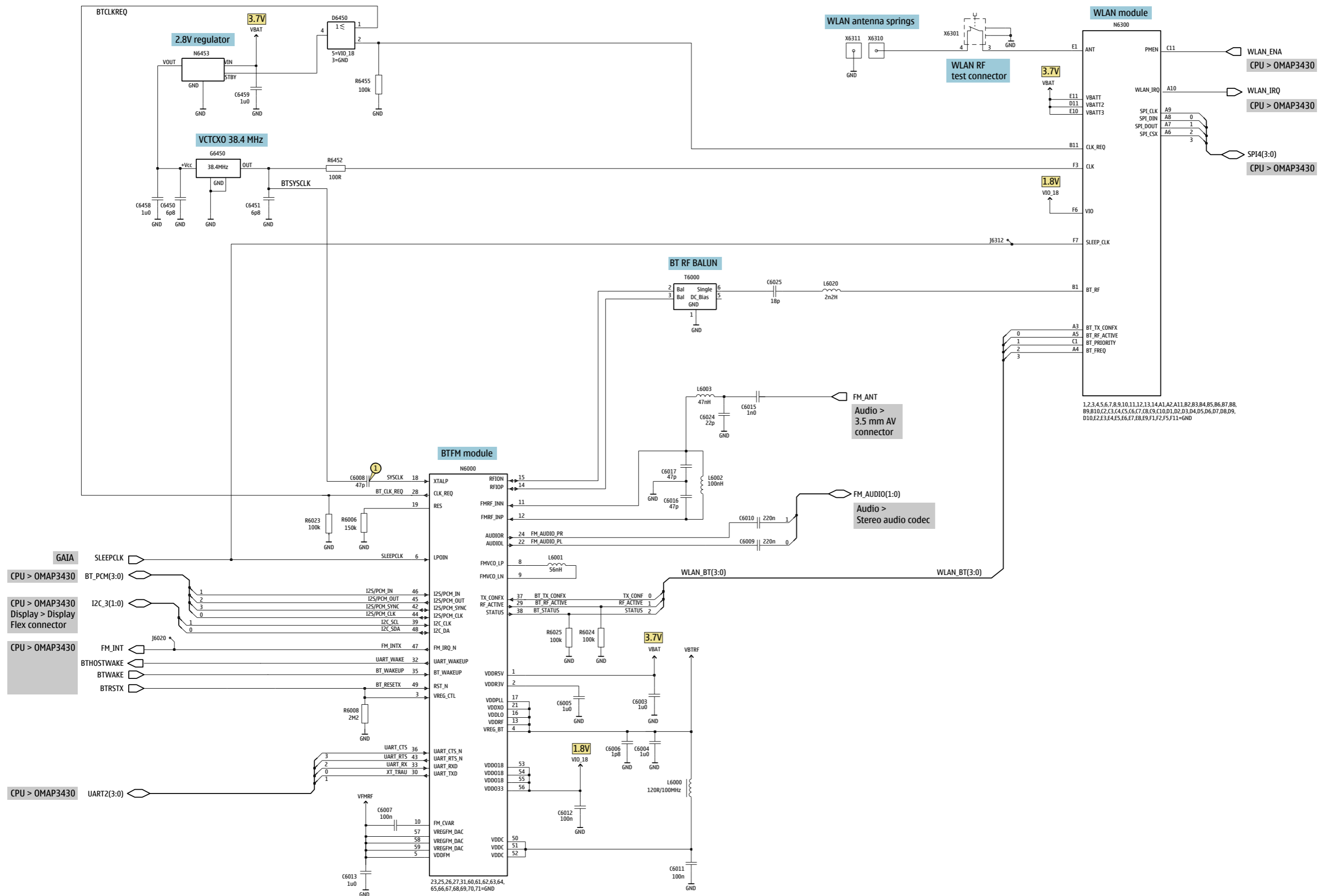


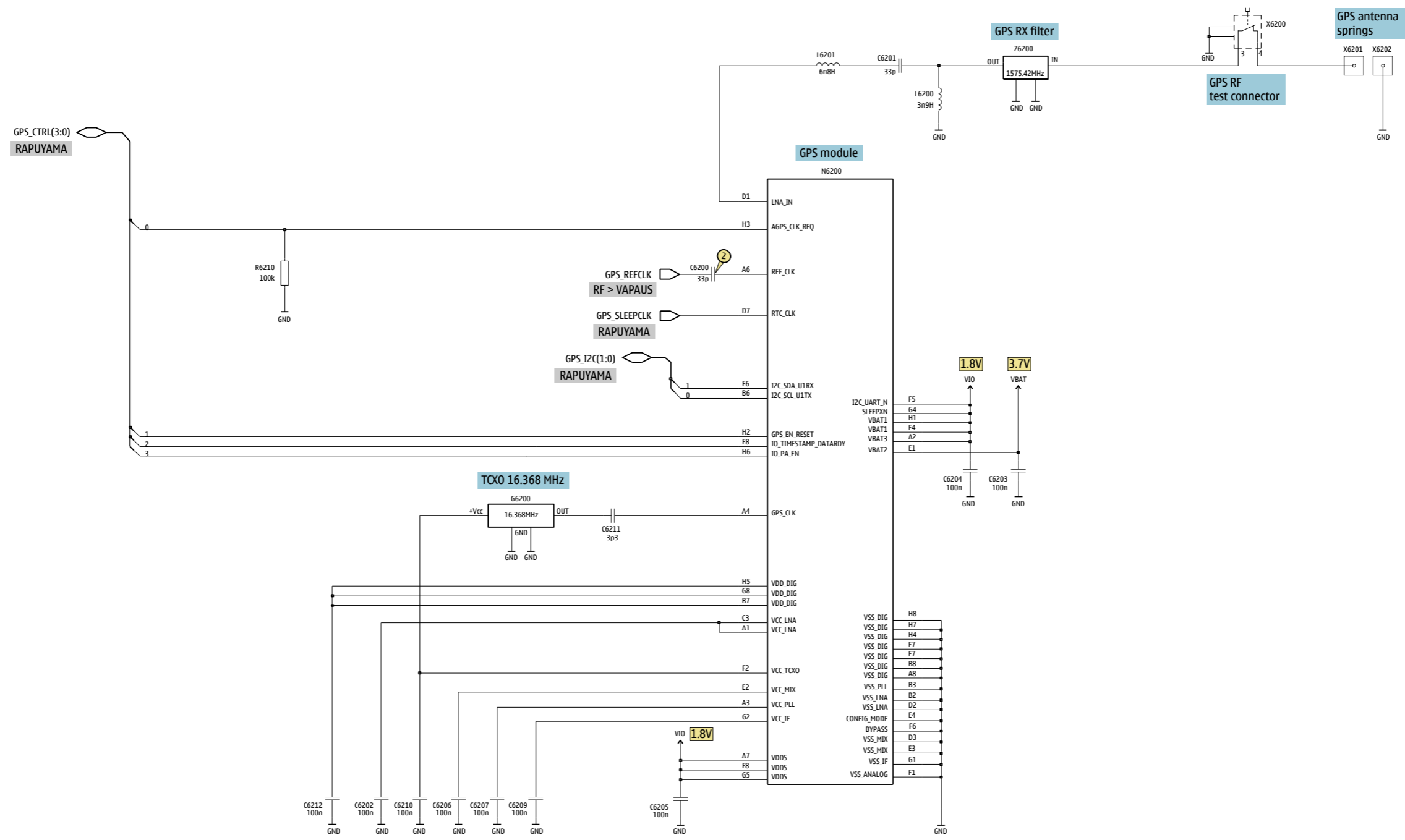




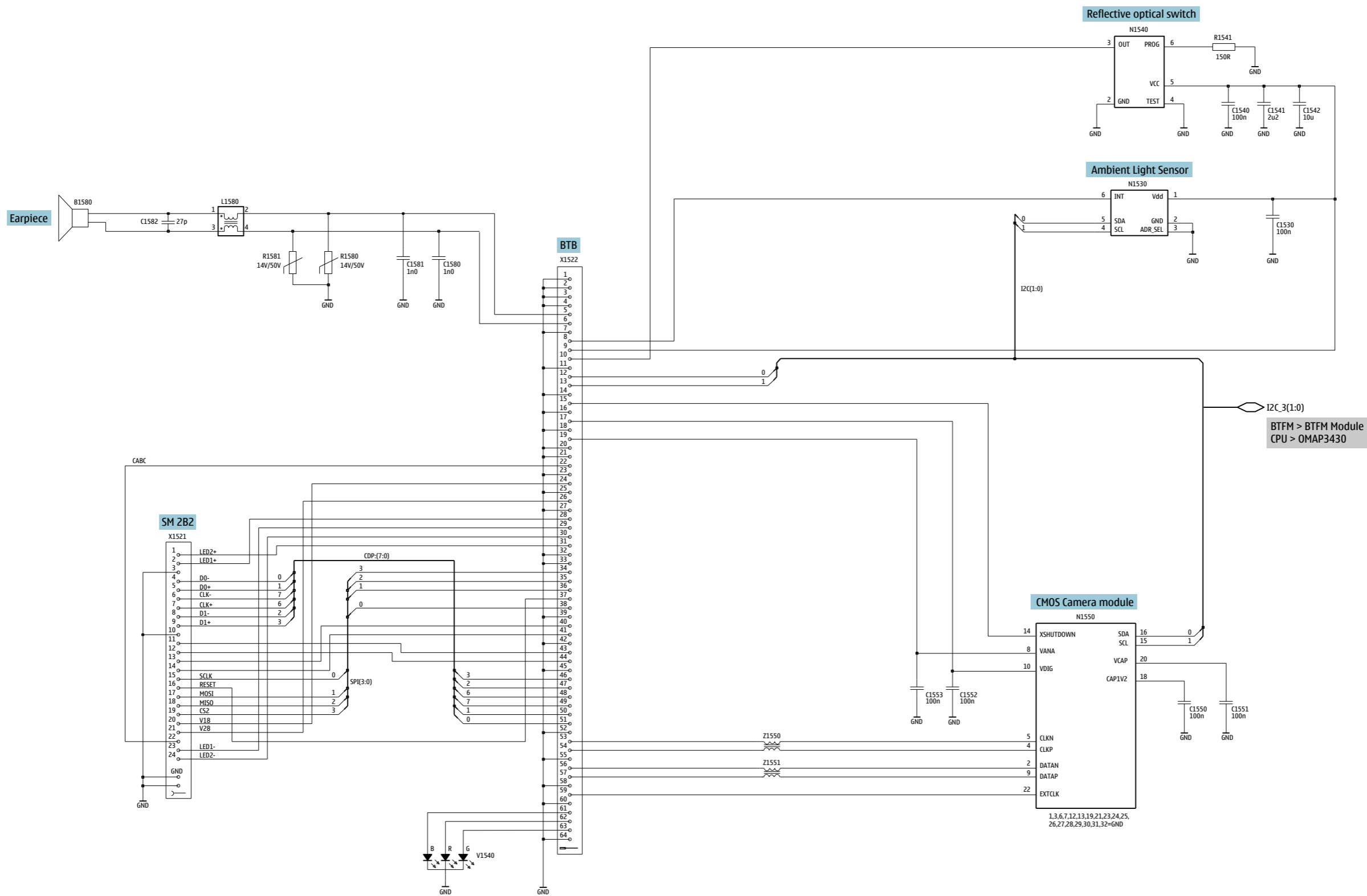


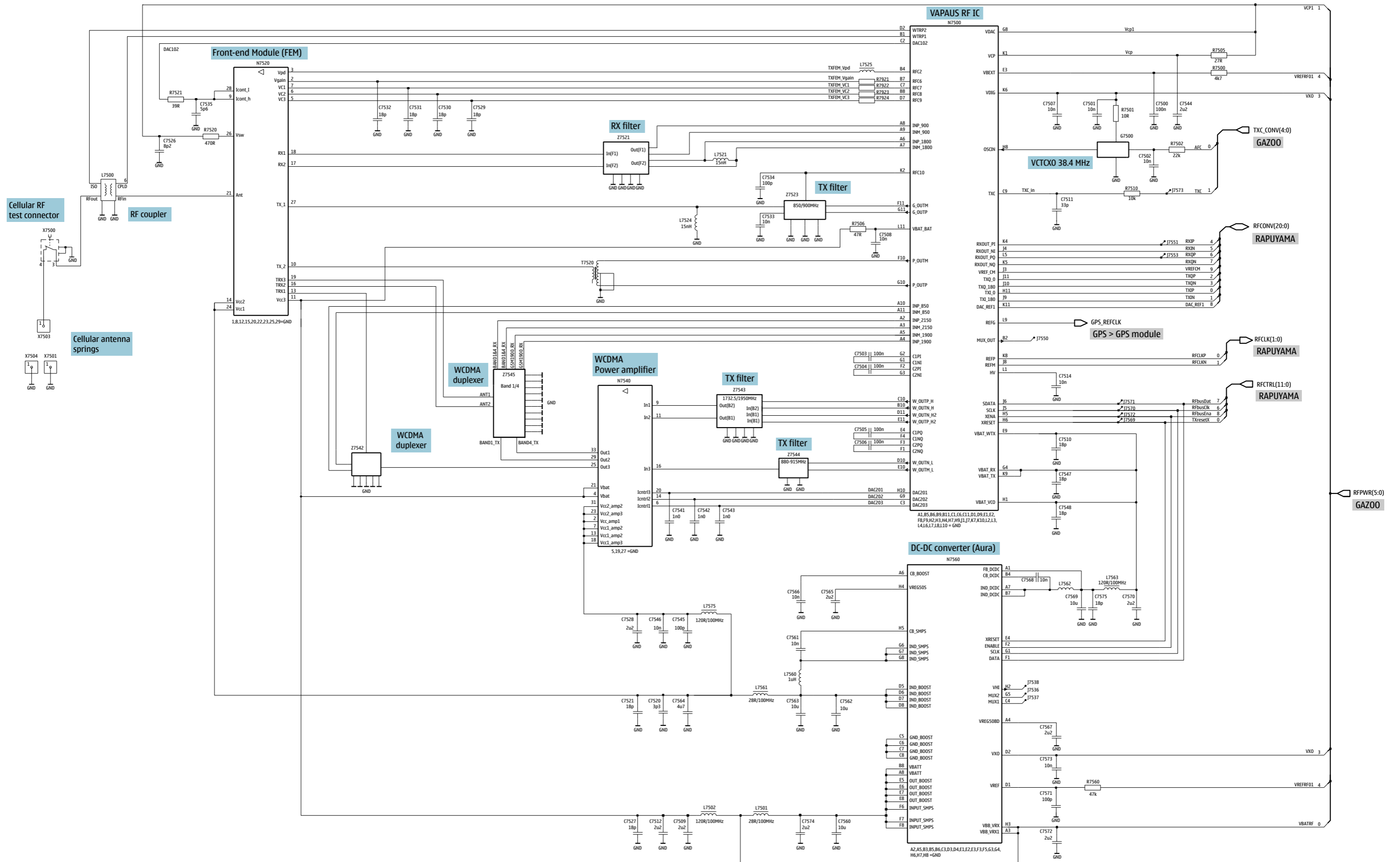


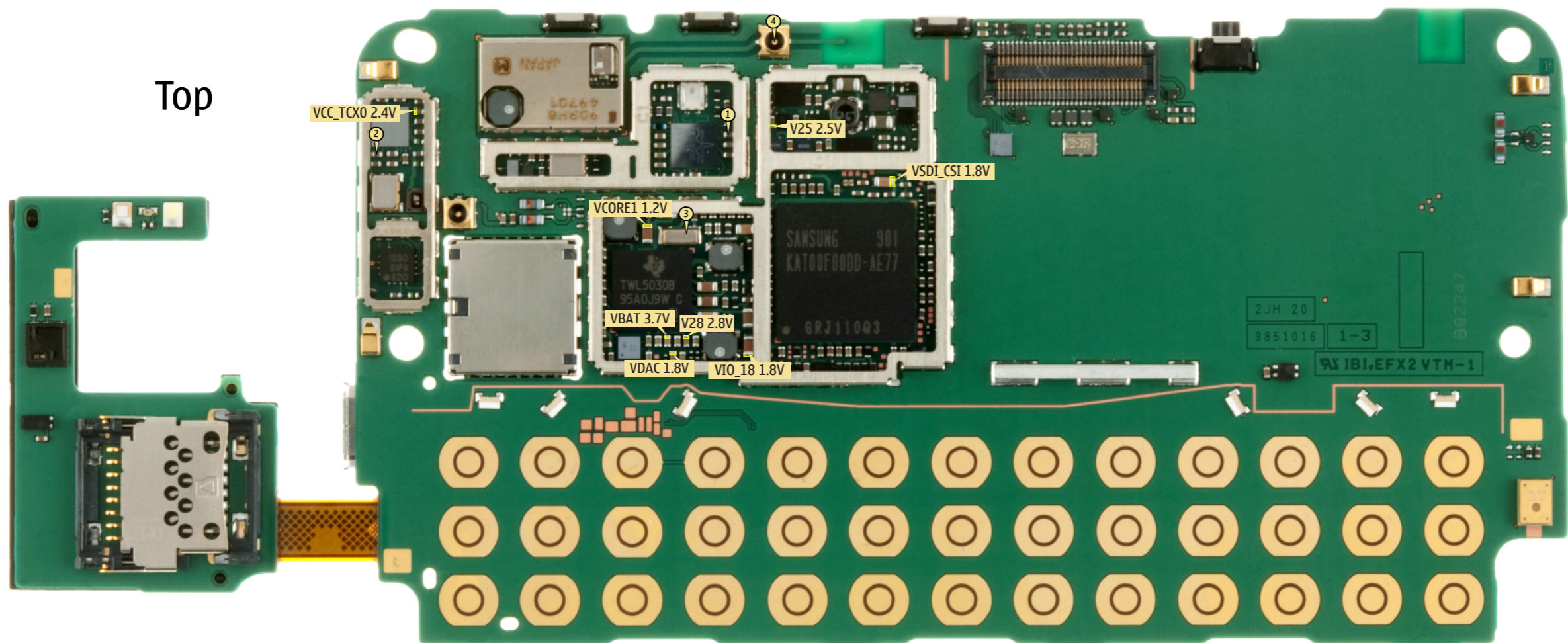
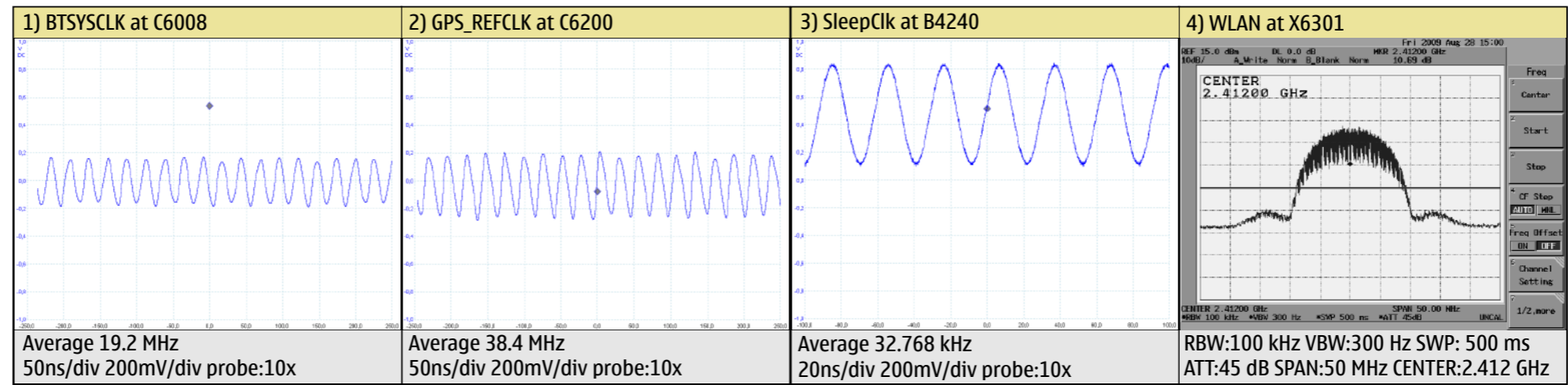


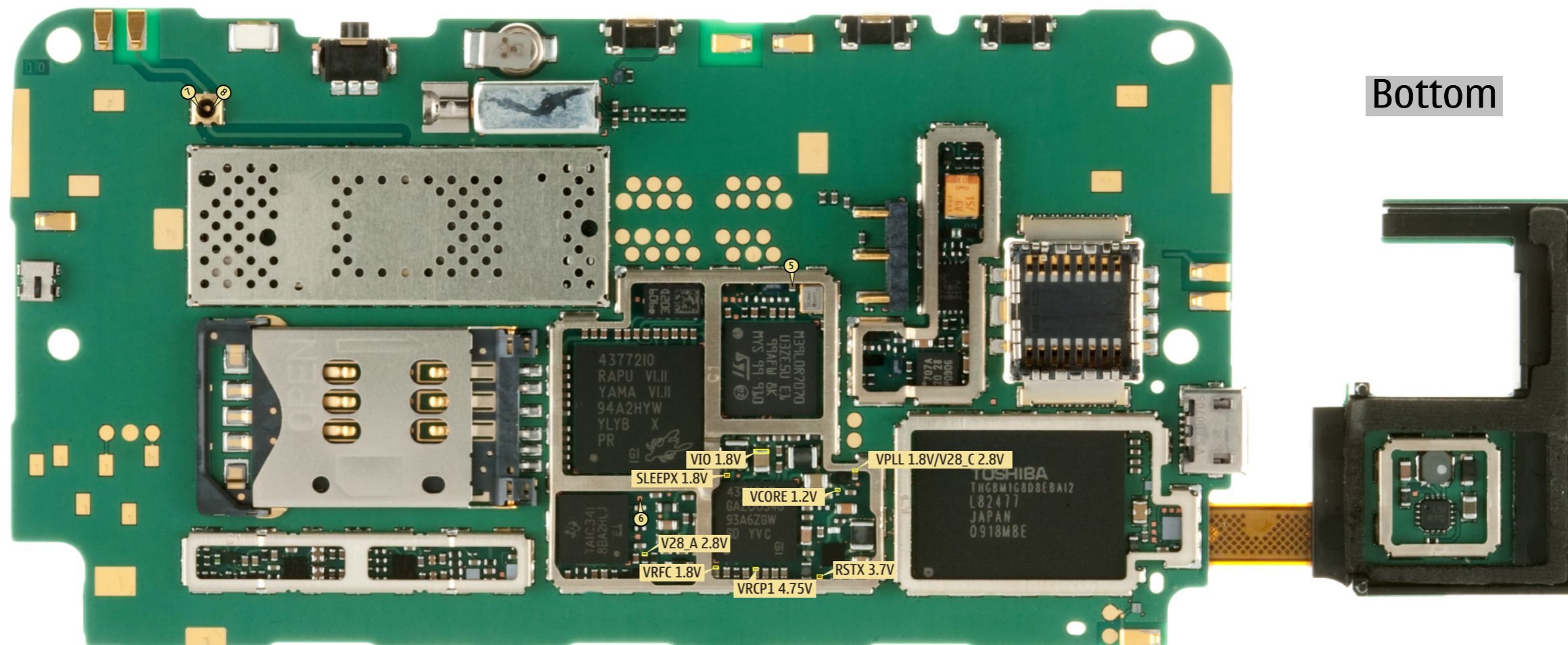
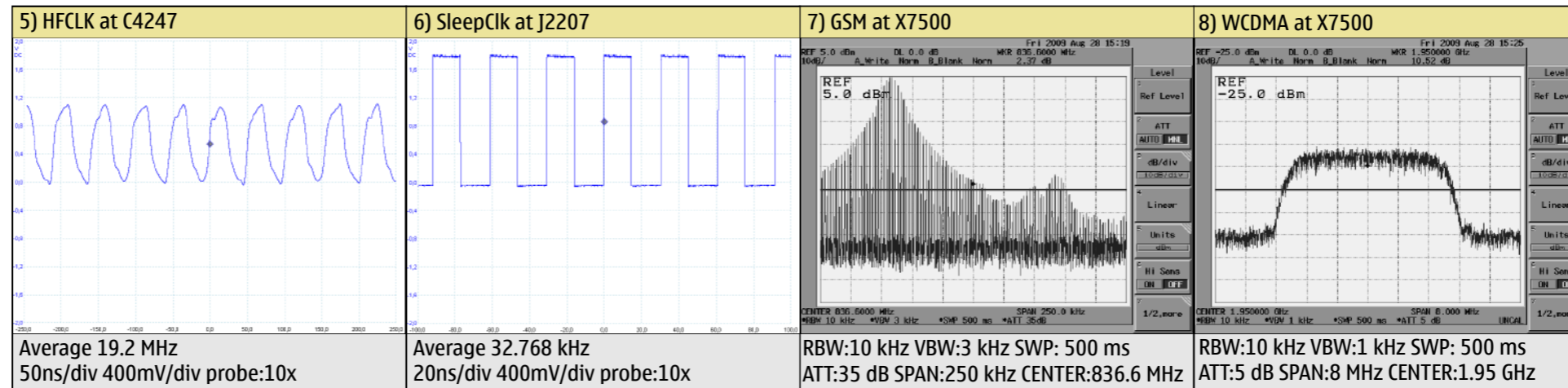








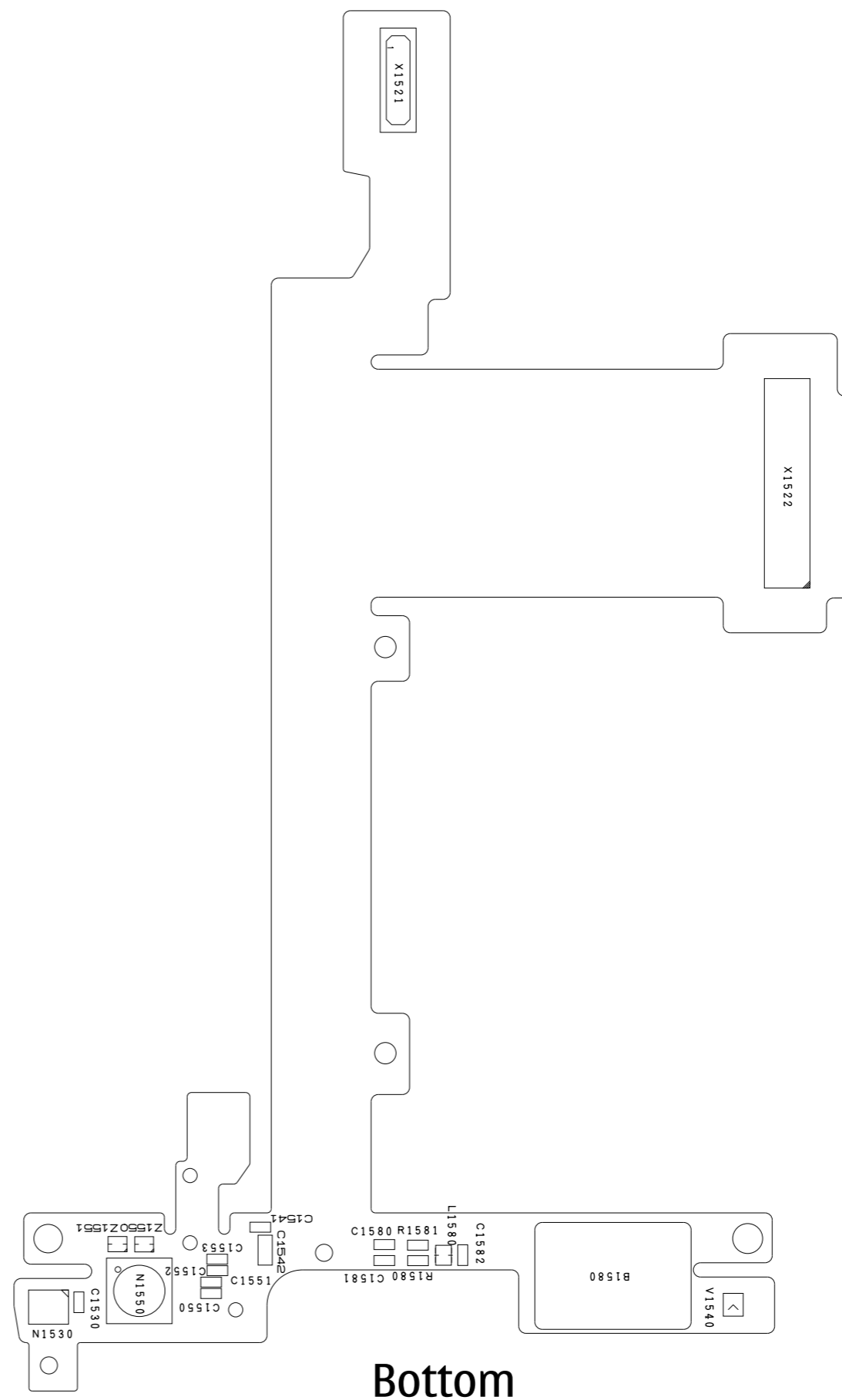
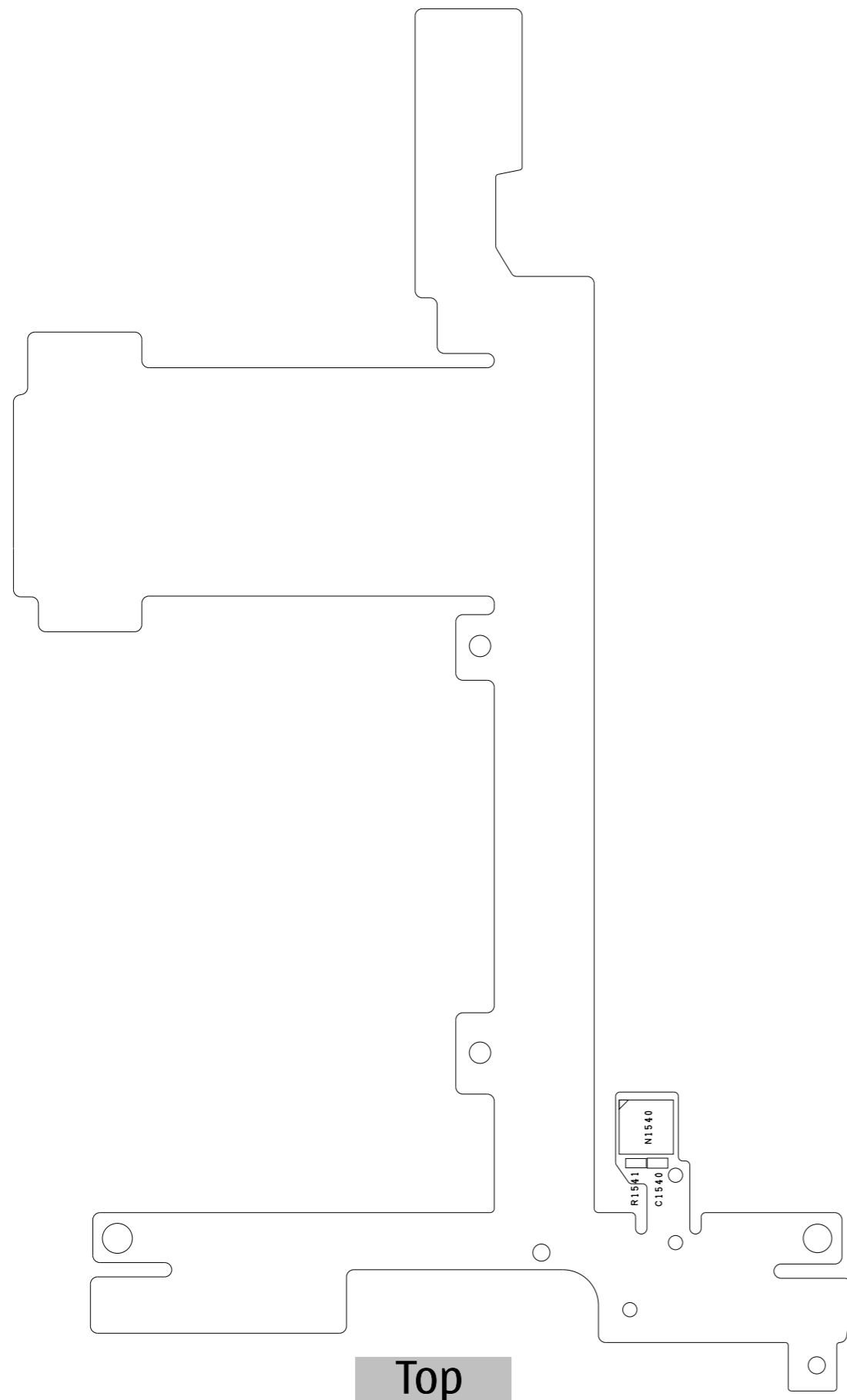












<b>B</b>
B1580
<b>C</b>
C1530
C1540
C1541
C1542
C1550
C1551
C1552
C1553
C1580
C1581
C1582
<b>L</b>
L1580
<b>N</b>
N1530
N1540
N1550
<b>R</b>
R1541
R1580
R1581
<b>V</b>
V1540
<b>X</b>
X1521
X1522
<b>Z</b>
Z1550
Z1551